

2017 ANNUAL REPORT



WINTER PARK
day nursery

EXCELLENCE IN EARLY EDUCATION



DEAR FRIENDS AND SUPPORTERS,

As I look back at the last year, I am reminded of just how far the day nursery has come over the past several years as an organization and especially how much progress we've made for our children.

Some concrete proof of that came when the state of Florida recently released the 2016 - 2017 Voluntary Pre-Kindergarten (VPK) readiness rates for private VPK providers like us. These are used to determine whether or not VPK providers are adequately preparing students for kindergarten. This is the first time since 2013 that these scores have been released. We are so proud that during the 2016 - 2017 school year 82% of our students, who were assessed by their kindergarten teachers, passed the screening! This is a significant increase from the 60% of our students who passed in 2013! In addition to the hard work of the teaching staff, this increase can be attributed to, our implementation of the Nemours BrightStart! Program. This program works with small groups of students identified as at risk of reading failure when they get to elementary school.

Another noteworthy development, last year I shared the board's commitment and work toward taking the day nursery to the next level of educational excellence. One way we are striving to do that is by converting one of our classrooms to an infant toddler room in response to community need. Our plans are to open this room in August 2018, enabling us care for four infants and as many as 10 toddlers. By working with children at younger ages than in the past, the day nursery is better equipped to provide early intervention, when needed ~ thus that will set them up for success as they grow. This is just another way we are meeting the expressed needs of our staff and our parents for an affordable, high- quality program to care for their young children and babies. By offering substantial tuition scholarships, so parents can continue to work and/or attend school secure in the knowledge their children are being well cared for, we are improving the lives of both low-income parents and their children.

Finally, an important first-step that grew out of our board's strategic planning efforts was the funding we recently received from Dr. P. Phillips Foundation. This support is paving the way for Winter Park Day Nursery to implement a more aggressive, and strategic, fundraising and development effort that will increase our capacity to set the agency up for future success.

As always, I encourage you to join us for an event - or just take some time to stop by the school for a tour, to read to students or just come to play. I can share our goals for the coming years and well beyond as well as how you can be a part of this pivotal time in our history! The support of our donors, volunteers, staff and board members remain critical to our quest for Excellence in Early Education.



Ali Di Maria

Executive Director



OUR MISSION

Winter Park Day Nursery provides a secure, nurturing and educational environment that is affordable & supports family diversity.

OUR VISION

Winter Park Day Nursery will build a stronger community by providing high-quality, affordable early childhood education that will prepare our children to succeed in school and life.



OUR VALUES

Accessibility

We believe that every child deserves a high-quality preschool education, so we offer scholarships to make our program affordable for all families.

Quality

We believe that by upholding the highest standards, we inspire others. WPDN is accredited by the National Accreditation Commission (NAC) for Early Care and Education Programs.

Diversity

We believe that valuing different perspectives is vital to the success of our mission. Our school family reflects the rich diversity of our community.

Support

We believe that nurturing children means supporting their families with resources like parenting education, healthy meals, behavioral and developmental services and an emergency food and clothing pantry.

Impact

We believe in advancing the community-wide quality of preschool education by serving as a demonstration site for best practices and advocating for the cause of early childhood education.



"We cannot thank you enough for your smart, loving and consistent care of our precious grandchildren. You all have been a safe and nurturing place for them during "rough seas". We are amazed at how they have matured and learned under your teachers' guidance!"

- Former WPDN Grandparent 2017



A SNAPSHOT OF 2017

82

total students
(ages 2-5)

33

Voluntary Pre-K
graduates

80

children on
the wait list

269

school volunteers
(\$19,992 value)

43,138

nutritious meals
and snacks

160

hours of
parent education

74%

of students received
tuition scholarships

355

hours on
the playground

9

pounds of food
from the garden

6

two-year-olds
per teacher

9

three-year-olds
per teacher

10

pre-kindergarteners
per teacher

WPDN'S 78TH YEAR



◀◀ **2017 Ovation Award Winner:** In 2017 WPDN was nominated for and won "Best Childcare/Pre-school" for the Ovation Awards sponsored by the Winter Park Chamber of Commerce and the Winter Park Maitland Observer. We are so proud of our school and the Winter Park Community that supports our work and the families we serve.



◀◀ **Disney VolunTEars:** Winter Park Day Nursery has had over 200 volunteers to the school to conduct various projects or work with our students. One special volunteer day included a few members of the Disney's VolunTEars! They were so energetic and our students had a blast talking with personal friends of Mickey Mouse. Our students love having new friends come in to share their talents and experiences with them or just come to play!

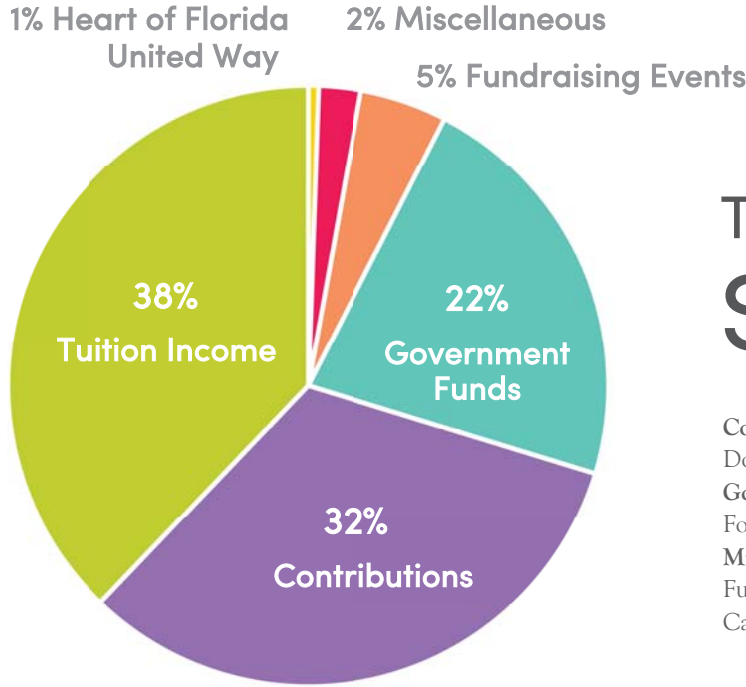


◀◀ **The Jinger Iselin Summer Scholarship Fund:** As a retirement gift for Jinger Iselin, a 13 year teacher at WPDN and beloved by all, a summer scholarship fund was created in her name. This scholarship is presented to a VPK student at WPDN who exemplifies the school family, regardless of his or her home life, family history/background, financial status or any other factors. This scholarship is funded through donations throughout the year as well as at our Orange Blossom Jubilee event.



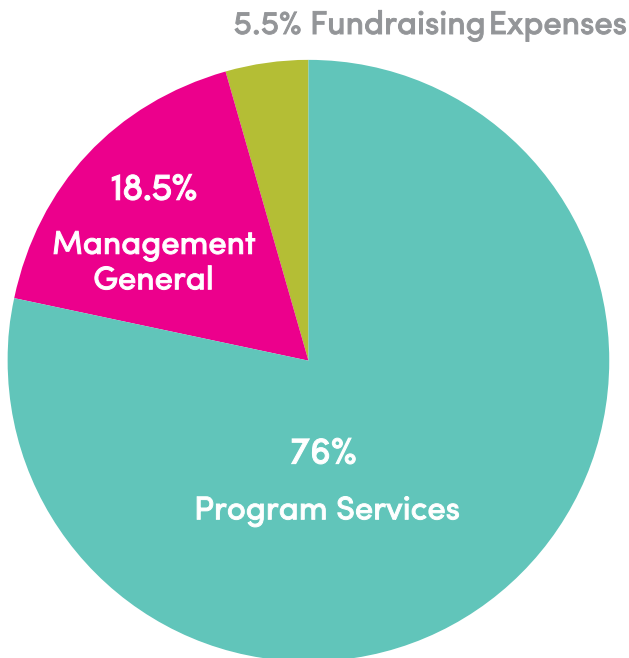
◀◀ **An Investment in our Future!** A grant request was submitted at the end of 2017 to Dr. Phillips Charities. In early 2018 Dr. Phillips Charities contributed \$54,000 to Winter Park Day Nursery so our Executive Director can hire an assistant and focus on donor relations oriented tasks & continue to be among the most recognized and respected preschools in Orange County, serving as a demonstration site for best practices. We continue to strive to be a leader and innovator in educating young children, but also a trusted resource for families.

2017 FINANCIAL HIGHLIGHTS



Total Income:
\$818,873

Contributions: Foundation, Individual Donors, and Corporate Donations
Government: VPK, School Readiness, Food Program
Miscellaneous: Interest, Parent Fundraiser, Federal/State Employee Campaigns



Total Expenses:
\$848,317

Program Service: Labor, Education and Training, Classroom Supplies, Food Program, Facilities
Management General: Operations, Professional Fees



Re: Explanation of Deficit as of December 31, 2017

To Whom It May Concern;

This letter serves to address the income deficit for the Winter Park Day Nursery for the fiscal year ending December 31, 2017. The board and executive staff were aware there would most likely be a shortfall for the 2017 fiscal year due to a significant loss of funding from a major grant funder the prior year.

To remedy the loss of income from this year, the board quickly set a goal—as part of the strategic planning process—to build our capacity as an organization and stabilize our fundraising income by diversifying our donor base and our fundraising methods. As an immediate response, the board implemented week-long campaigns in both 2017 and 2018 to increase contributions for the current year. We plan to increase support from individual donors through the advancement of a stronger development and fundraising program.

Through a grant received in 2018 from the Dr. P. Phillips Foundation, the Executive Director will be able to employ an assistant to support the fundraising aspects of the position of Executive Director. The grant will also fund intensive training and coaching for the staff, as well as the board, on how to implement a stronger fundraising and development program for the school.

Because of the strong leadership and hard work of our board of directors, we are still in good financial standing. Over the past 12 years the school has on average increased its revenue by \$13,388 each year for a total income of \$174,043 in revenue over expenses for the 12-year time period. We understand that there are ups and downs in the economic environment and in our community. We strive to assure funds are properly invested and allocated to be sure we are able to weather the more challenging years by managing the income in the abundant years.

Sincerely,

Ali DeMaria
Executive Director
407-647-0505
exec@wpdaynursery.org

BOARD OF DIRECTORS

Chris Iselin, *Chair*
Larry J. Herring, *Vice Chair*
Nicole R. Finegan, *Treasurer*
Rebecca Marshall, *Secretary*
Claire Fournier
Brian Giessuebel
Charles Kulmann
Emily Lemieux
Linda Manzonelli
Vianka McConville
Andrea Morgan
Antje Pepper
Cecilia Scott
Amelia Storer
Zak Sulton
Sarah Walker
Ed Wentzel

ADMINISTRATIVE TEAM

Ali DeMaria, Executive Director
Crystal Levens, Dir. of Administration
Shirley Shankle, Kitchen Manager
Megan Brown, Dir. of Family Services
Dara Morris, Office Manager

TEACHING TEAM

Shelagh Alsamman
Paige Baldocchi
Kyle Brandon
Jasmine Browder
Beryl Chung
Sierra Clare
Stephanie DeScalzo
Vicky Diel
Lauren Gould
Stacey Hayes
Heather Horne
Elizabeth (Jinger) Iselin
Alondra Kenon
Natalie Kinscy
Milena Llenas
Jessica MacWittney
Namomi Medina
Vanessa Medina
Alexandra Sarton
Jaziza Vazquez
Destiny Walton
Amy Wenner
Nicole Wilkins
Jared Young



MAJOR DONORS & SPONSORS

Central Florida Foundation

John Lord

The Chesley G. Magruder Foundation

John R. & Ruth W. Gurtler Foundation

The City of Winter Park

Leslie Grammer Rev. Trust

Edyth Bush Charitable Foundation

Michael and Aimee Kakos

Elizabeth Morse Genius Foundation

The Ryan Foundation

Fred Szydlik

Warren and Augusta Hume Foundation

Harper Family Charitable Foundation

Winifred Johnson Clive Foundation

Joe & Sarah Galloway Foundation





WINTER PARK DAY NURSERY

741 S. Pennsylvania Avenue
Winter Park, FL 32789
407.647.0505
www.wpdaynursery.org

