



WINTER PARK
day nursery

EXCELLENCE IN EARLY EDUCATION



DEAR FRIENDS AND SUPPORTERS,

As we soar through our 78th year, I take a moment to look back at all of our exciting accomplishments during 2016. As our wait list grew to more than 120 students, we focused many discussions on how to adjust what we do to better serve more families. Our board and staff looked carefully at all options, shared ideas and discussed ways to expand our work to reach more children and families. I'd like to thank the many friends of the nursery who shared their expertise in various fields with us. With their help, we were able to estimate costs of various options for growth. Ultimately, we determined that in order to take the day nursery to the 'next level' of educational excellence, and accomplish long-term goals, we must continue to increase our organizational capacity. This capacity building will focus on such key areas as facilities, staffing, fundraising and board development. It is with your support that this is possible.

Through collaboration, partnership building and systems-level networking, Winter Park Day Nursery continues to bring more external resources into our program to broaden our community impact. These relationships are essential to our success and ability to bring more talent, knowledge and funding to our school.

I encourage you to join us for an event, visit the school for a tour, volunteer to read to students or just come to play. When we meet I look forward to sharing our goals for the next three years, and beyond, and how you can be part of this pivotal time in our history! The support of our donors, volunteers, staff and board members remains critical to our quest for *Excellence in Early Childhood Education*.



Ali Di Maria

Executive Director



OUR MISSION

Winter Park Day Nursery provides a secure, nurturing and educational environment that is affordable & supports family diversity.

OUR VISION

Winter Park Day Nursery will build a stronger community by providing high-quality, affordable early childhood education that will prepare our children to succeed in school and life.

OUR VALUES

Accessibility

We believe that every child deserves a high-quality preschool education, so we offer scholarships to make our program affordable for all families.

Quality

We believe that by upholding the highest standards, we inspire others. WPDN is accredited by the National Accreditation Commission (NAC) for Early Care and Education Programs.

Diversity

We believe that valuing different perspectives is vital to the success of our mission. Our school family reflects the rich diversity of our community.

Support

We believe that nurturing children means supporting their families with resources like parenting education, healthy meals, behavioral and developmental services and an emergency food and clothing pantry.

Impact

We believe in advancing the community-wide quality of preschool education by serving as a demonstration site for best practices and advocating for the cause of early childhood education.





"Thank you for all the support you have shown [my son] and I through the years. We have had a bunch of ups and downs. WPDN has been an incredible support system as well as providing [my son] a safe and nurturing environment through it all. You all are truly incredible. Thank you a million times."

- Current WPDN Parent, 2016



A SNAPSHOT OF 2016

91

total students
(ages 2-5)

30

Voluntary Pre-K
graduates

123

children on
the wait list

193

volunteers at
the school

43,138

nutritious meals
and snacks

160

hours of
parent education

78%

of students received
tuition scholarships

355

hours on
the playground

9

pounds of food
from the garden

6

two-year-olds
per teacher

9

three-year-olds
per teacher

10

pre-kindergarteners
per teacher

WPDN'S 77TH YEAR



After reading *Three Key Years* by George C. Halverson, Ms. Jinger was reminded of the importance of these critical years in the life of every child. Billions of neuron connections take place when adults talk, play, sing and read with children during a time of individual, loving and regular interaction. Vocabularies are built, reading skills are enhanced and emotional security is promoted. Ms. Jinger loves the opportunity to interact with each child on a weekly basis. "It's a gift to my heart." - Ms. Jinger



Over the years we have been fortunate to enjoy many programs from the Orlando Philharmonic Orchestra. Throughout 2016 the Orchestra came out once a month to share the newest Story-time Symphony with their amazing team. This would not be possible without the support of foundations including the Galloway Foundation who has helped to fund this program for two years now.



For the last several years, members of the Rotary Club of East Orange County have volunteered to read to our students once in December for the holidays and again in March during the week of Dr. Seuss' birthday. A Rotarian has volunteered each year to dress up as Santa Claus giving new books to the children. The club has also donated new books to be given to the children on their birthday and at graduation. Their continued support has made a significant impact on the lives of our students.

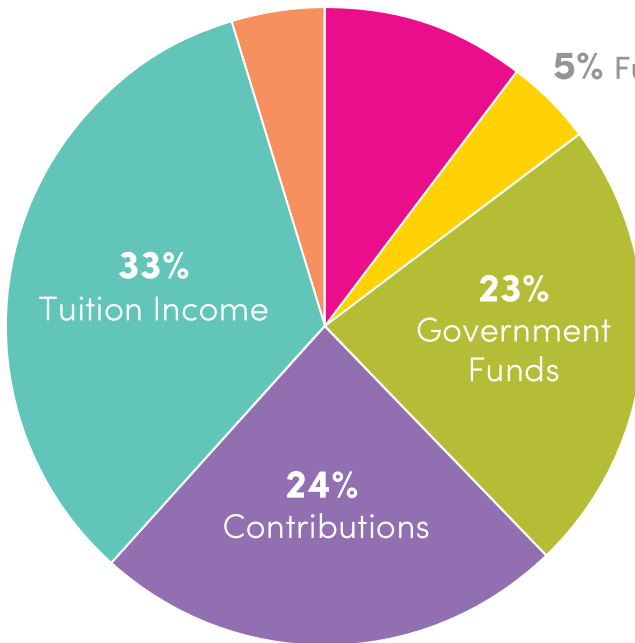
**CENTRAL FLORIDA
FOUNDATION**



Challenged by our burgeoning wait list, local community leaders recommended developing a business plan detailing the 'next steps' to increase our capacity. With the generosity of the Winter Park Community Foundation Funds at the Central Florida Foundation, our board of directors is developing an action plan, with the guidance of a professional consultant, to lead our team through the strategic planning process for the next three years. Thank you for investing in us!

2016 FINANCIAL HIGHLIGHTS

5% Miscellaneous 10% HFUW + Campaign



Total Income:
\$850,136

HFUW = Heart of Florida United Way

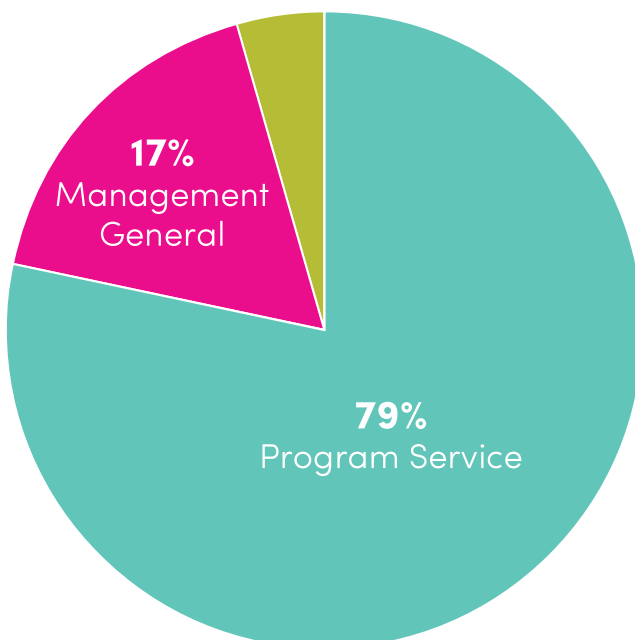
Grant and campaign direct donations

Contributions: individual donors,
corporate donations, foundation
contributions

Government: VPK, school readiness,
food program

Miscellaneous: interest, parent fundraiser,
federal/state employee campaigns

4% Fundraising



Total Expenses:
\$829,168

Program Service: labor, education and
training, classroom supplies, food
program, facilities

Management General: operations,
professional fees

MAJOR DONORS & SPONSORS

City of Winter Park

Michael Dick and Priscilla Church

Edyth Bush Charitable Foundation

Elizabeth Morse Genius Foundation

Harper Family Charitable Foundation

Joe & Sarah Galloway Foundation

John R. & Ruth W. Gurtler Foundation

Heart of Florida United Way

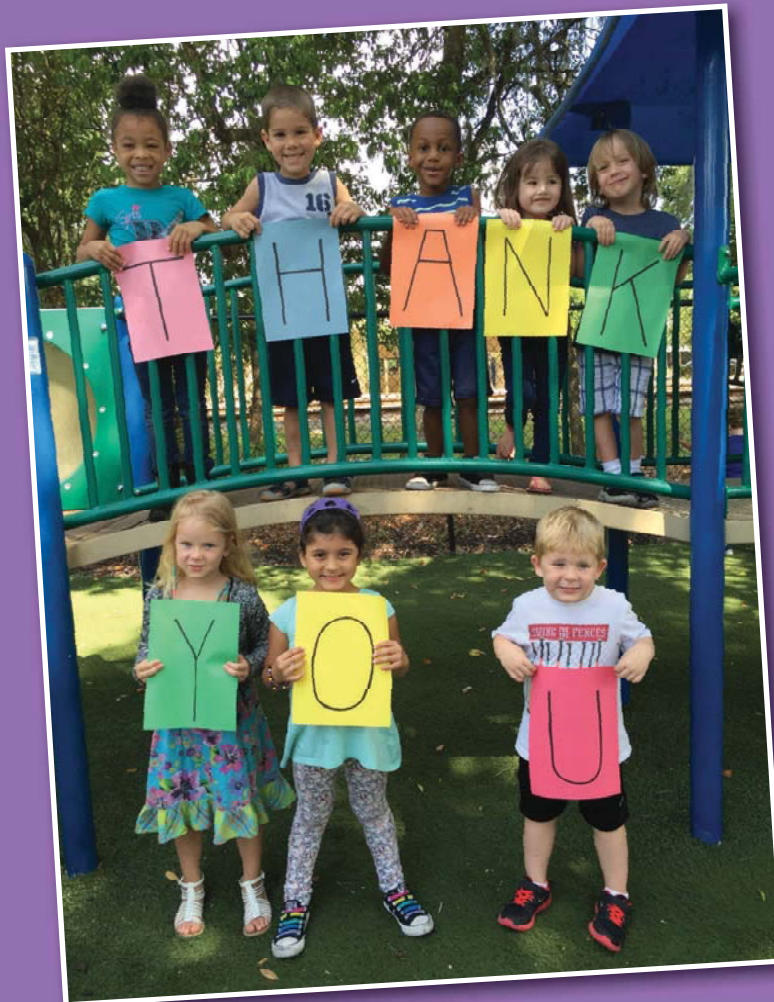
Michael and Aimee Kakos

Leslie Grammer Rev. Trust

The Ryan Foundation

Fred Szydlik

Warren and Augusta Hume Foundation



BOARD OF DIRECTORS

Chris Iselin, Chair
Larry J. Herring, Vice Chair
Nicole R. Finegan, Secretary/Treasurer
Mike Burch
Brian Giessuebel
Charles Kulmann
Linda Manzonelli
Rebecca Marshall
Vianka McConville
Andrea Morgan
Antje Pepper
Cecilia Scott
Sarah Walker
Ed Wentzel

ADMINISTRATIVE TEAM

Ali DeMaria, Executive Director
Crystal Levsen, Dir. of Administration
Tammy Surrine, Dir. of Education
Megan Brown, Dir. of Family Services
Tia Masek, Community Relations Coordinator
Dara Morris, Office Manager

NUTRITION TEAM

Shirley Shankle, Kitchen Manager
Lakishia Singleton, Cook

TEACHING TEAM

Shelagh Alsamman
Paige Baldocchi
Rhannon Blake
Jasmine Browder
Beryl Chung
Stephanie DeScalzo
Vicky Diel
Sophia Godwin-Taylor
Stacey Hayes
Elizabeth (Jinger) Iselin
Amy Johns
Natalie Kinscy
Milena Llenas
Vanessa Medina
Taylor Rentz
Alexandra Sarton
Jaziza Vazquez
Amy Wenner



WINTER PARK DAY NURSERY

741 S. Pennsylvania Avenue

Winter Park, FL 32789

407.647.0505

www.wpdaynursery.org